

PAPER D3D

Kit's Contents:

This document contains everything you need to complete the model above.

More specifically, when you assemble the model you will have:

- 1 Wooden sign
- 1 Long table
- 2 Shelves
- 6 Crates
- 4 Walls and 1 floor
- 1 Roof
- 50 items you can place on any surface, like the shelves, tables and crates to display them. Pick some at random and stock your shop in just a minute!
- 1 NPC token of Marietta, my first ever D&D character to tend to your shop

Extra Materials:

- Glue, preferably white glue, other thick glue, or double sided adhesive tape. Using glue, avoid the printed parts since the ink can bleed, and use a very thin layer for each part to avoid creasing. Wait for it to dry completely before using.
- Exacto knife. Some pieces are very small and will be easier to cut with a knife than scissors.
- Ruler. This will help you cut the pieces straight.
- Special cutting mat. This will avoid damaging the working surface.
- A damp cloth to clean your fingers from the glue during the assembly.

Getting Started:

- 1 - Print this document with the highest resolution settings of your printer. You may skip the instructions and print only the patterns below.
- 2 - Wash your hands.
- 3 - Cut all pieces on the solid line, and fold them on the dotted lines.
- 4 - Get rid of all spare paper bits before starting the assembly.

Tips:

- If you are using stick glue, make sure to cover the whole tab.
- Use a spare piece of paper to apply glue to avoid getting it on the table, making it easier to smear the pieces.
- Use a ruler and an exacto knife over a special mat or thick cardboard, to cut the pieces out. Some details are very small and it's easier to get them this way.
- Make very superficial cut over the dotted lines to make the folding easier. Be very careful to apply the least amount of pressure you can to avoid cutting all the way through.
- If you cut all the way through, you can still fix the tab in place using adhesive tape in the back.



PAPER D&D

patreon.com/paperDnD

General Instructions:

- 1 - Cut along the solid lines, making sure to be as exact as possible.
- 2 - Fold the dotted lines in, with the printed part facing you. Get rid of the spare parts, or use them as a base to glue the tabs.
- 3 - Glue all white tabs on the printed side, being careful not to get your fingers dirty with the glue.
- 4 - Stick the glued tabs to the blank side of the paper to form the model, making sure the white tabs are covered completely by the colored paper. You can aid yourself with a pencil with a clean eraser, pressing the tabs to the paper with it to make sure they are glued completely.
- 5 - Let the glue dry, and you're done!

Disclaimer:

All the crafts, models, and textures, were designed by Patricia Maldonado for her Patreon PaperDnD. Item descriptions and stats are as shown on the D&D 5e system, owned by Wizards of the Coast. These models are not meant to be used for commercial use, or distributed in physical or digital form. If you enjoy these designs and are not a patron yet, consider joining to support the creation of more projects like these, at www.patreon.com/paperDnD.

I want to thank the following Patrons for making this possible:

Amy Caldwell Amy Manning AwesomeXav Cat Lindeland
Dana de Waal Double Helix Emily Sanjanwala Emma Palmer Brown
Erkerut Demonheart Joshua Tubb Kaden Patrick Michel Fongern
Michelle Nagy Oscar Moreno Raneff Winters rnusk
Roman Semin Saul Russell Seth Hein Shadowmaster69

Thank you so much for your support!

If you have any questions or suggestions reach me on the PaperDnD Discord server, or send me a message on Patreon.

Happy crafting!

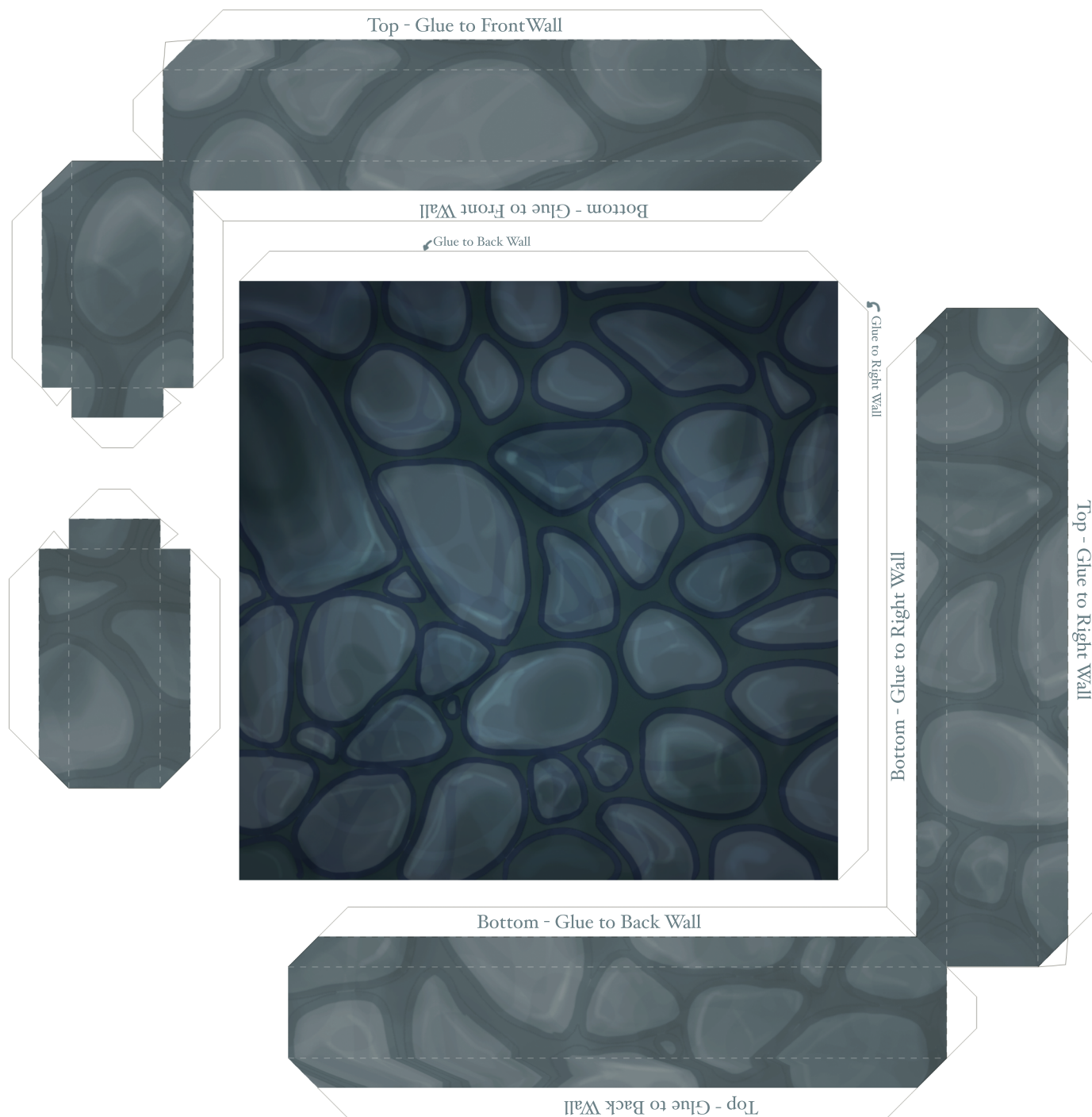


PAPER DnD

patreon.com/paperDnD

I. Walls and Floor.

The Walls are a common 4 sided cube with the stone shapes glued to them. Be careful to check where the top and the bottom of each figure are. Remember the bottom doesn't have any folds. The floor is pasted to the back and right walls, but if you want you can cut the flaps and leave it moveable.

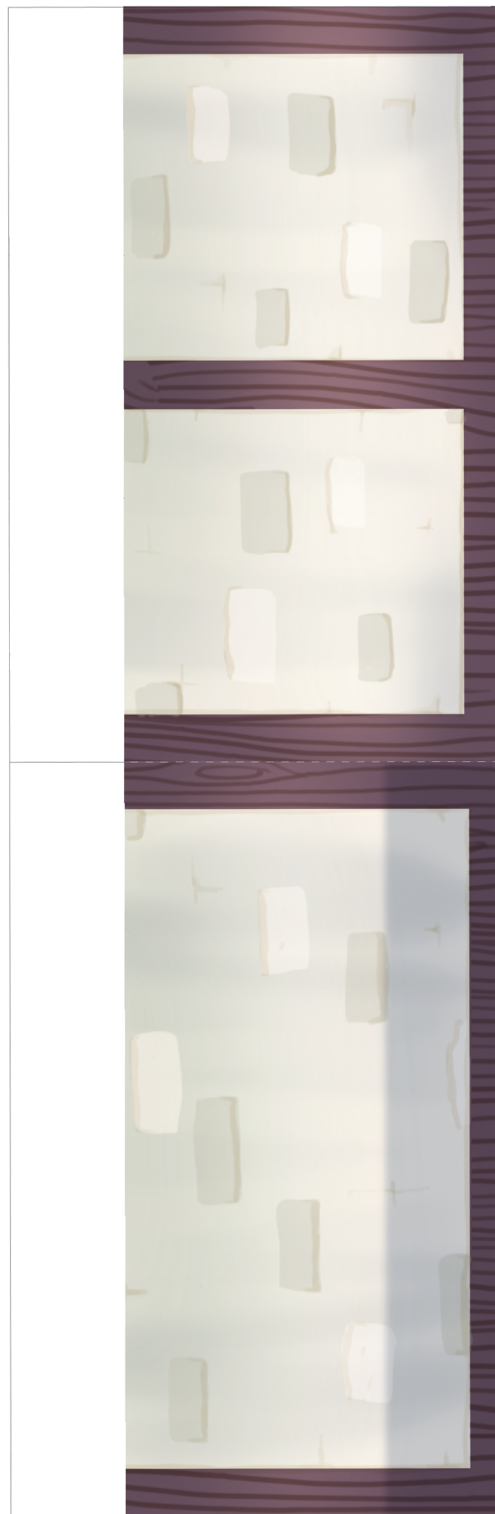


PAPER D&D

patreon.com/paperDnD

I. Walls and Floor.

Cont.



2. Roof.

The Roof is probably the trickiest part of the whole model, so be sure to take your time. The biggest flaps should be folded out instead of in to be able to paste the bottom of the roof on the side triangles.

Begin by pasting all the pieces except the bottom.

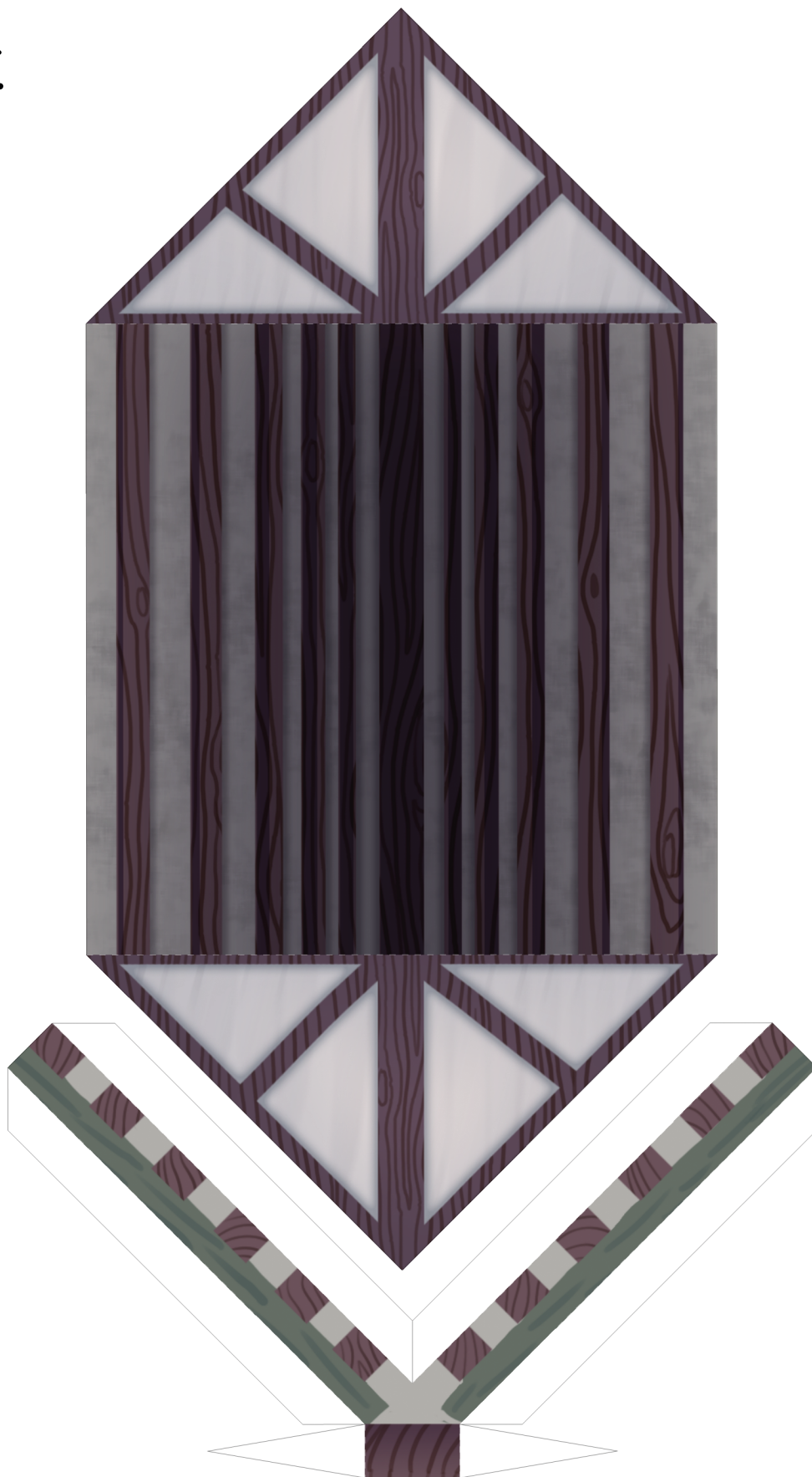


PAPER D&D

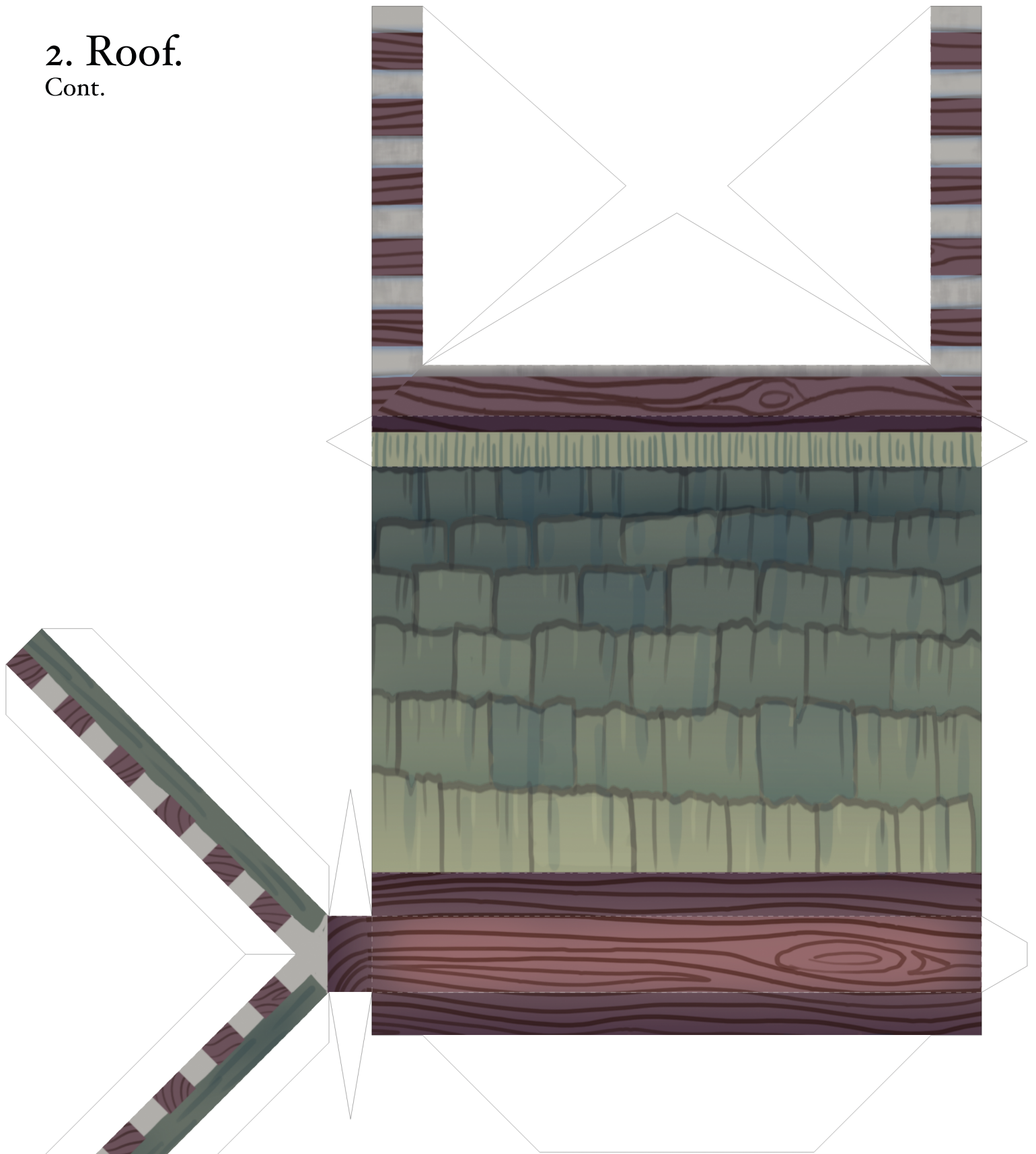
patreon.com/paperDnD

2. Roof.

Cont.

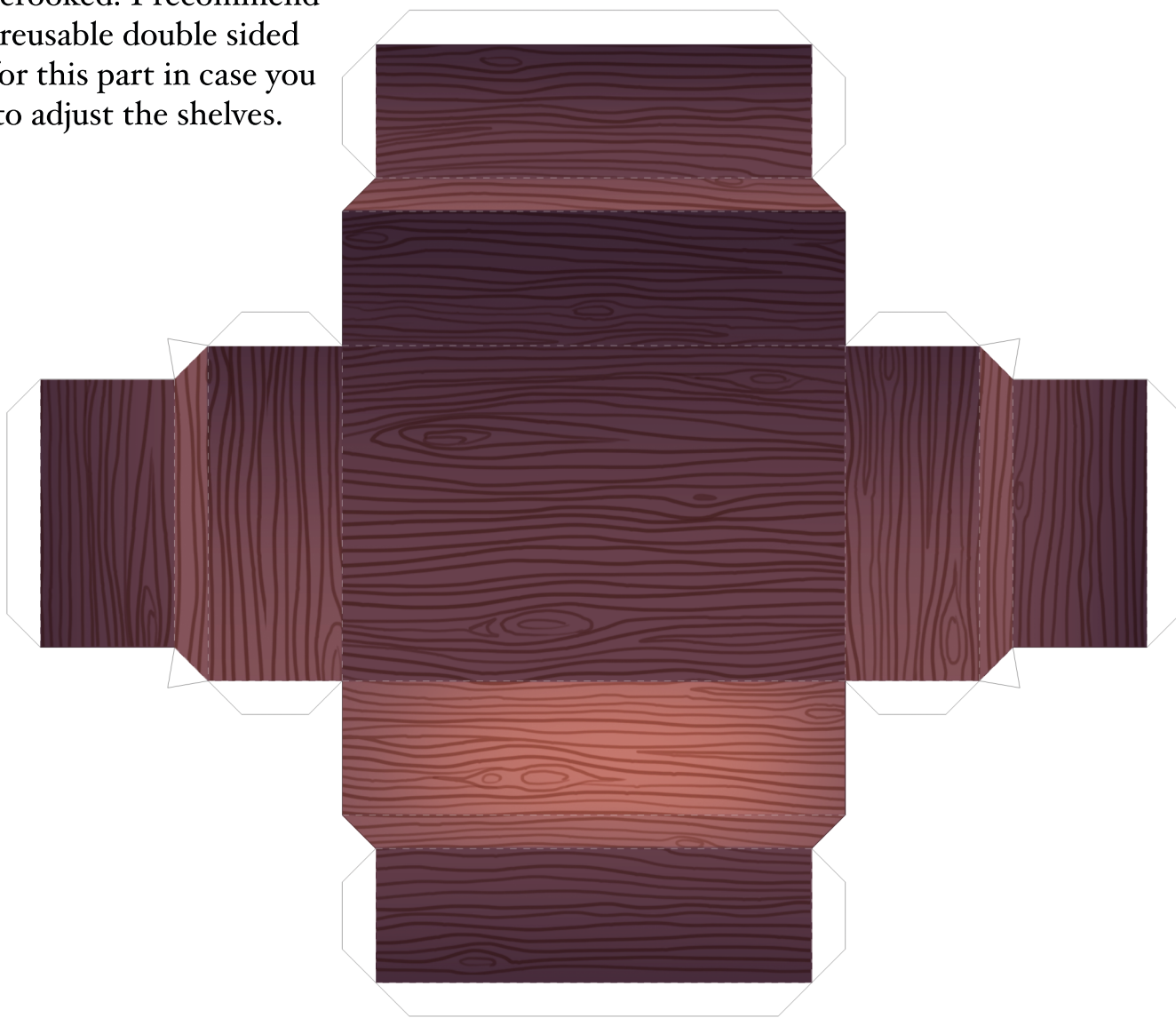


2. Roof. Cont.



3. Shelves.

For the shelves it's better to start with the frame and then paste the shelves inside. If you are able to get a 5mm thick polystyrene sheet you could place it inside the shelves and frame to make it sturdier and more precise, but it's not necessary. Be patient placing the shelves to avoid pasting them crooked. I recommend using reusable double sided tape for this part in case you need to adjust the shelves.

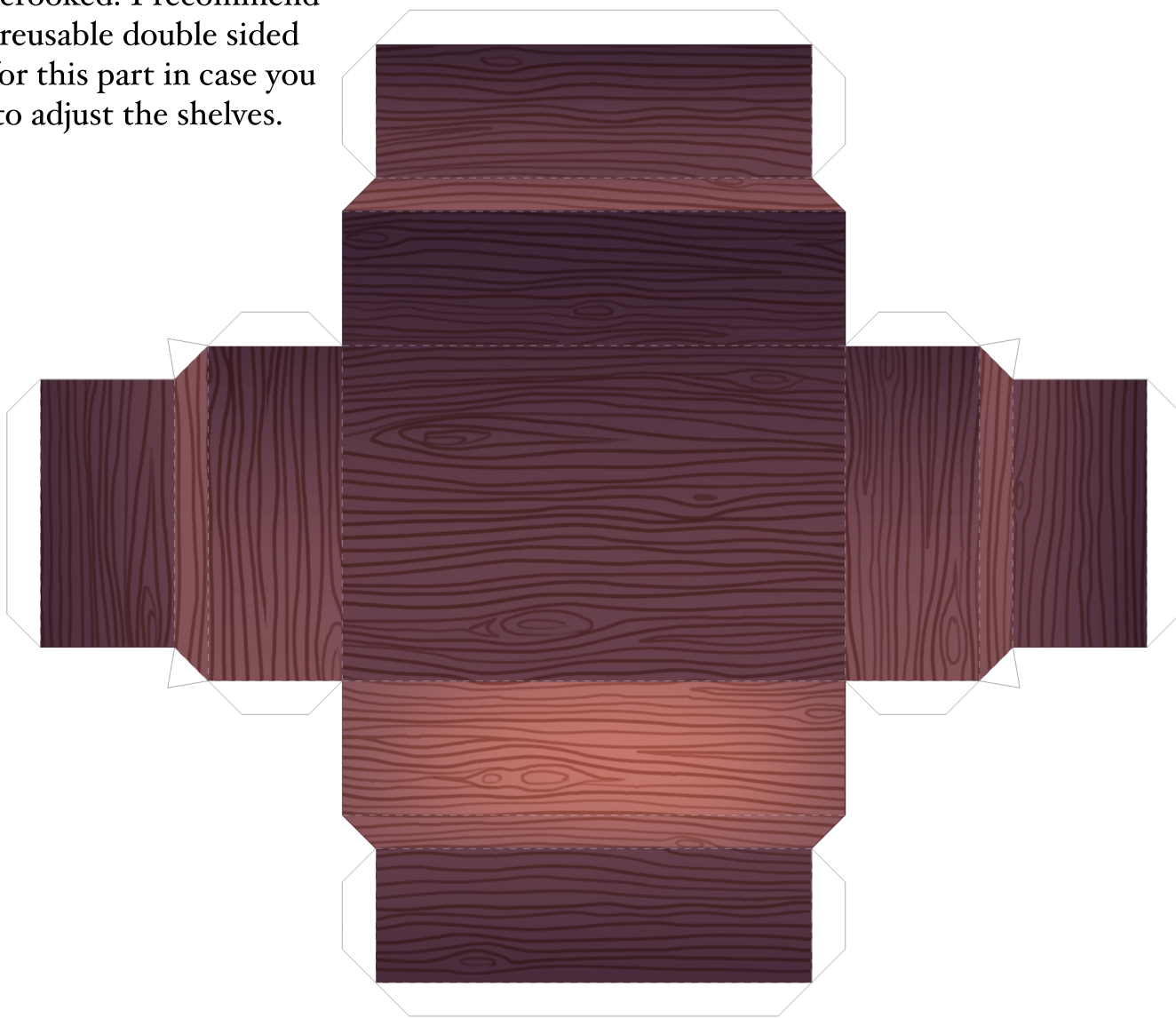


PAPER D+D

patreon.com/paperDnD

3. Shelves.

For the shelves it's better to start with the frame and then paste the shelves inside. If you are able to get a 5mm thick polystyrene sheet you could place it inside the shelves and frame to make it sturdier and more precise, but it's not necessary. Be patient placing the shelves to avoid pasting them crooked. I recommend using reusable double sided tape for this part in case you need to adjust the shelves.



PAPER D+D

patreon.com/paperDnD

4. Revised Items, Table, NPC, Sign and Crates.

These will make your shop come to life! If you wish to print more than the items available, you can search for the individual items' PDF files on Patreon.



Ball Bearings 1 gp 2 lb	Basket 4 sp 2 lb	Bedroll 1 gp 7 lb	Bell 1 gp	Blanket 5 sp 3 lb	Block & Tackle 1 gp 5 lb	Bottle 2 gp 2 lb	Bucket 5 cp 2 lb	Caltrop 1 gp 2 lb	Candle 1 cp
Chow Bolt Case 1 gp 1 lb	Map/Scroll Case 1 gp 1 lb	Chain (10 ft.) 5 gp 10 lb	Chalk (1 piece) 1 cp	Crowbar 2 gp 5 lb	Fishing Tackle 1 gp 4 lb	Flask or Tankard 2 cp 1 lb	Grappling Hook 2 gp 4 lb	Hammer 1 gp 3 lb	Healer's Kit 5 gp 3 lb
Hourglass 25 gp 1 lb	1 oz. Ink bottle 10 gp	Inkpen 2 cp	Jug/Pitcher 2 cp 4 lb	10 ft. Ladder 1 sp 25 lb	Lamp 5 sp 1 lb	Bulseye Lantern 10 gp 2 lb	Hooded Lantern 5 gp 2 lb	Lock 10 gp 1 lb	Magnifying Glass 100 gp
Mees Kit 2 sp 1 lb	Steel Mirror 5 gp 0.5 lb	Oil Flask 1 sp 1 lb	Paper (1 s.) 2 sp	Parchment (1 s.) 1 sp	Piton 5 cp 0.25 lb	10 ft. Pole 5 cp 7 lb	Iron Pot 2 gp 10 lb	Pouch 5 sp 1 lb	Sack 1 cp 0.5 lb
Sealing Wax 5 sp	Signal Whistle 5 cp	Soap 2 cp	10 Iron Spikes 1 gp 5 lb	2 Person Tent 2 gp 20 lb	Tinderbox 5 sp 1 lb	Torch 1 cp 1 lb	Waterskin 2 sp 5 lb (full)	Whetstone 1 cp 1 lb	Backpack 2 gp 5 lb
Hemp Rope 1 gp 10 lb (cont.)	Silk Rope 10 gp 5 lb (cont.)	Rations (1 day) 5 sp 2 lb							



PAPER D&D

patreon.com/paperDnD